

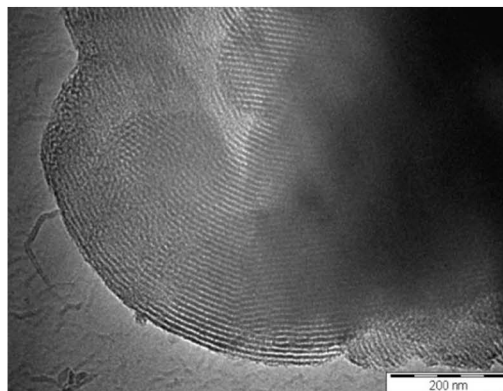
## Background

Glantreo have been producing large quantities of nanostructured mesoporous silica for over 10 years. Mesoporous silica is a porous synthetic silica with highly ordered pore structures. Mesoporous silica is produced by a surfactant templating process developed with our customers' needs in mind. Our mesoporous silicas are highly pure, robust with large surface area.

## General Specifications

State	Amorphous powder
Colour	White
Solubility in Water	Insoluble
Silicon Dioxide content*	>99.99%
Moisture content	<1%
Loss on Ignition	<1%
Bulk Density	Approx. 0.3 g/ml

\* Does not apply to Ti and Al doped mesoporous silica.



## Product Specifications

Product	Description & Pore Structure	Particle Size (µm)	Surface Area (m <sup>2</sup> g <sup>-1</sup> )	Pore Size (nm)
PSBA1510040R	Hexagonally ordered SBA-15 type mesoporous silica.	100	800	4
PSBA1510060R	Hexagonally ordered SBA-15 type mesoporous silica.	100	700	6
PSBA1510080R	Hexagonally ordered SBA-15 type mesoporous silica.	100	500	8
PSBA1610060R	Cubically ordered SBA-16 type mesoporous silica.	100	600	6
PMCM481030R	Cubically ordered MCM-48 type mesoporous silica.	10	1500	3
PMCM4110030R	Hexagonally ordered MCM-41 type mesoporous silica.	100	1100	3
PSBA1515040Ti8	Hexagonally ordered SBA-15 type mesoporous silica doped with Titanium	150	600	4
PSBA1515040Ti4	Hexagonally ordered SBA-15 type mesoporous silica doped with Titanium	150	600	4
PMCM4815030Al4	Hexagonally ordered MCM-48 type mesoporous silica doped with Aluminium	150	1,000	3

## Applications

Mesoporous Silica is used in a host of application areas host of cutting edge applications such as chromatography catalysis drug delivery, host material, encapsulation imaging

**Packaging:** Can be supplied in quantities from 5g to 2.5kg, packaged in sealed plastic (polyethylene) containers. Larger quantities are available on request.

**Safety and handling precautions:** Mesoporous Silica is generally considered a nuisance dust. Use and handling of silica fume does not represent a health risk when normal safety rules are observed. Direct contact may cause irritation of eyes. Prolonged contact may cause skin irritation. Inhalation may cause respiratory irritation resulting in coughing and shortness of breath. This product may be harmful if swallowed. Do not get in eyes and avoid prolonged skin contact. Do not take internally. Wash thoroughly with water after handling. For more detail, see our SDS.

## Asia partner: Honlex Jones Co Ltd

Suite 2602-03, 26/F BEA Tower,  
Millennium City 5, 418 Kwun Tong Road,  
Kwun Tong, Kowloon, Hong Kong

Tel: +852 3950 3348  
Fax: +852 3950 3414  
E-mail: [info@honlexjones.com](mailto:info@honlexjones.com)  
[www.honlexjones.com](http://www.honlexjones.com)